

TRACKSTER

SERVICE BULLETIN

Service Dept. CUSHMAN MOTORS Lincoln, Nebraska



20

STARTER ACCESS BOOT

It has been brought to our attention that in some cases there is insufficient clearance between the starter access boot and the stationary pulley on the starter.

If this is encountered, it is recommended that the boot be removed and re-installed on the engine side of the fire wall. It will be necessary to cut out a small portion of the boot to make clearance for the adjusting bracket. See Figures 1 and 2.

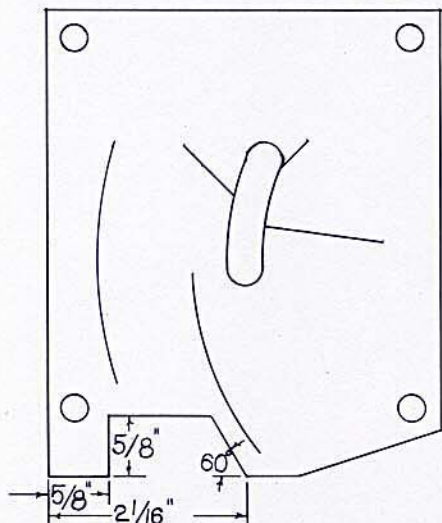


FIGURE 1



FIGURE 2